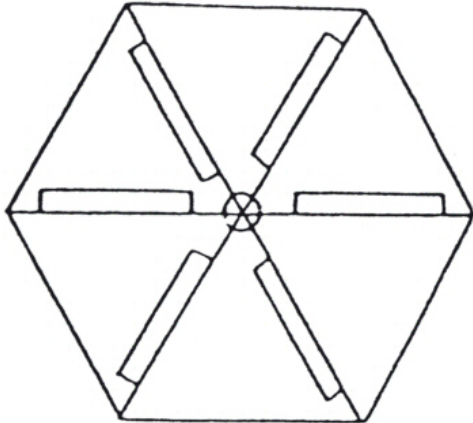


# Model 36161 – Biscayne II

## Assembly Instructions

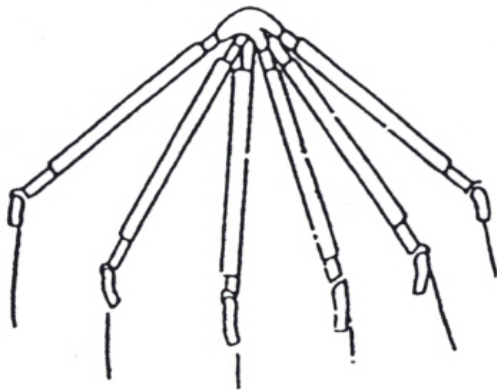
**Important:** We advise you to assemble the tent once before you go camping to become familiar with the assembly of the tent. For this model, it is recommended that two people be involved with the set up operation. Please look at the replacement parts diagram to see how your frame is assembled.

**Step 1:** Spread screen has out flat, with frame pole sleeves on top.



**Step 2:** Extend the wire accorded pole sections. There will be a total of 12 pole sections. The six straight poles are the side uprights (Key B). The six poles with one curved end are to be used as the roof ridge poles (Key A).

**Step 3:** While leaving screen has flat on the ground, insert the straight end of one of the roof ridgepole sections (Key A) through a black webbing loops and then through the pole sleeve on the roof of the screen house. Insert pole into opening of plastic hub. Make sure the spring clip located on the pole snaps into place in the slot on the plastic hub.



Repeat same procedure for each of the six ridgepole sections. Place the black webbing loop located at each corner over the “C” hook attached to the tent frame.



**Step 4:** Insert the reduced and at each of the remaining six screen house frame side uprights (Key B) into the open ends of the poles, which have been inserted through the sleeves on the screen house roof.

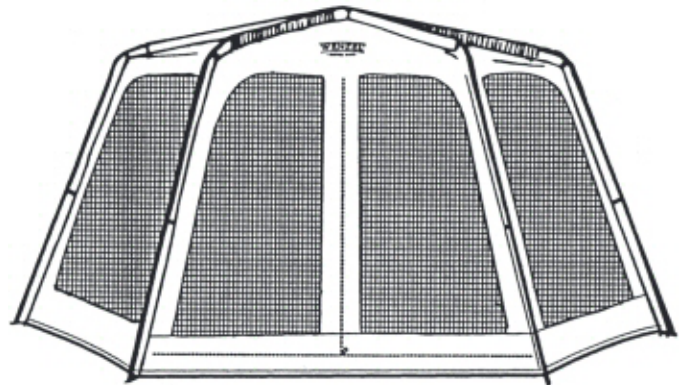
**Step 5:** With a person on opposite sides of the screen house, pushing up on the screen house frame, raising two poles at the same time. Continue until all poles are raised. Insert open end of each side uprights over the pin located at each of the six corners of the screen house. Adjust frame until screen house is in upright position.



**Step 6:** Insert stakes to the metal rings located at each corner of the screen house. Stake down by hammering each stake into the ground at a 45-degree angle, using a hammer or mallet.

**Note:** Make sure flaps located at bottom edge of screen house are on the inside before staking down.

Screen house should appear as shown:



**Note:** To take down screen house, follow steps above in the reverse order. Place stakes into stake bag and poles into carry bag, which are provided. The screen house should be folded into equal parts to distribute the bulk. Start a small tight roll, the width of the carry bag and roll away from tent roof, to allow air to escape. Once rolled, tie string or rope around screen house to hold in place. Slide screen house, and stakes into carry bag. Make sure screen house is clean and dry before storing. Do not store on concrete floor.

# Safety And Care Instructions

## Warning!

**Keep all flame and heat sources away from this tent fabric!** This tent is made with flame resistant fabric, which meets CPAI-84 specifications. **It is not fireproof.** The fabric will burn if left in continuous contact with any flame source. The application of any foreign substance to the tent fabric may render the flame-resistant properties ineffective.

### Danger:

Stoves, lanterns candles, grills heaters and other fuel burning devices produce carbon monoxide and will consume the available oxygen in this tent. Use of such devices in this tent will cause asphyxiation, carbon monoxide poisoning, and death or serious permanent injuries. For this reason:

- DO NOT use fuel burning devices inside or near this tent
- Your failure to follow this warning will cause death or serious and permanent injury to you or others using this tent.

### DO NOT ...

1. Do not pitch tent near open fire.
2. Do not leave campfire unattended
3. Do not leave children unattended inside a tent
4. Do not use heating, lighting or cooking equipment with open flames in or near tents
5. Do not use other than recommended water repellent compounds on your tent.
6. Do not spray the tent with insecticide.

### Do ...

1. Always extinguish campfire before leaving area.
2. Exercise care when using electricity and lighting in and near tents
3. Make certain your tent is properly ventilated in all weather conditions. In extreme weather conditions, snow could obstruct airflow and cause asphyxiation unless cleared frequently.
4. Anchor your tent securely to provide additional security from changing climatic conditions. Snow pegs, skis and/or heavy rocks may be necessary to supplement tent stakes and guy cords.
5. Take your tent down and store properly after camping.

### Do not leave your tent set up in direct sunlight longer than necessary.

The sun's ultraviolet (UV) light degrades almost every fabric and material. If left in the sunlight for prolonged periods of time, fabric will fade and weaken. **Do not store tent on concrete floor.**

Your tent is water repellent. However, it is not waterproof. During heavy rain, some leakage may occur. Keep objects from touching the inside of the tent. Such objects may cause leakage at point of contact. If seam leakage occurs, it can be controlled by applying a seam sealer compound.

Although our tents and screen houses are constructed to rigid specifications, periods of wind or rain soaking the ground may loosen the stakes and cause the uprights to sink into the ground. This will weaken the rigidity of the overall structure. Water pockets may also form in the roof if the unit is not assembled taut, possibly causing broken frames and torn fabric.

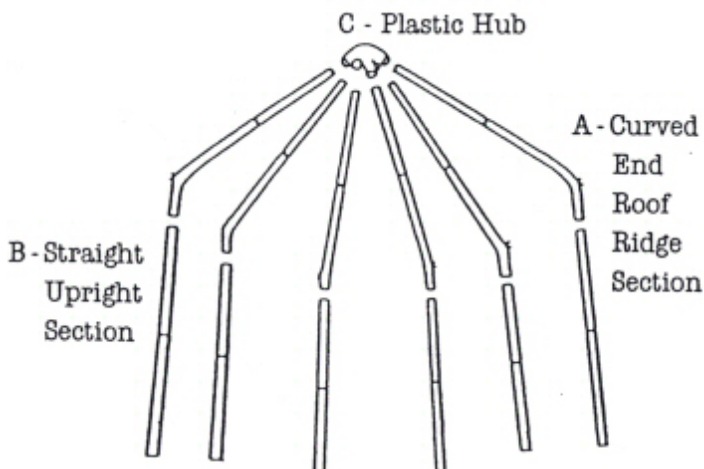


## Replacement Parts

If you have any questions or need to order a part, call 1-800-325-8368 or log into our website at [www.camping-n-gear.com](http://www.camping-n-gear.com) Please have your model number and part number available.

DO NOT ORDER BY REFERENCE KEY NUMBER

Send your request for parts to: **The Wenzel Company**  
113 Industrial Drive  
New Haven, MO 63068



Key Number	Model No. 36161		Qty. Req.
	Description	Part Number	
A	Curved end roof ridge section	03-0050B	6
B	Straight upright section	03-0051B	6
C	Plastic hub	97-0061	1
	Complete frame	36161FR	1
	Steel stakes	Pin Stake	6